

Concession boundaries of SRC plantation - Liberia



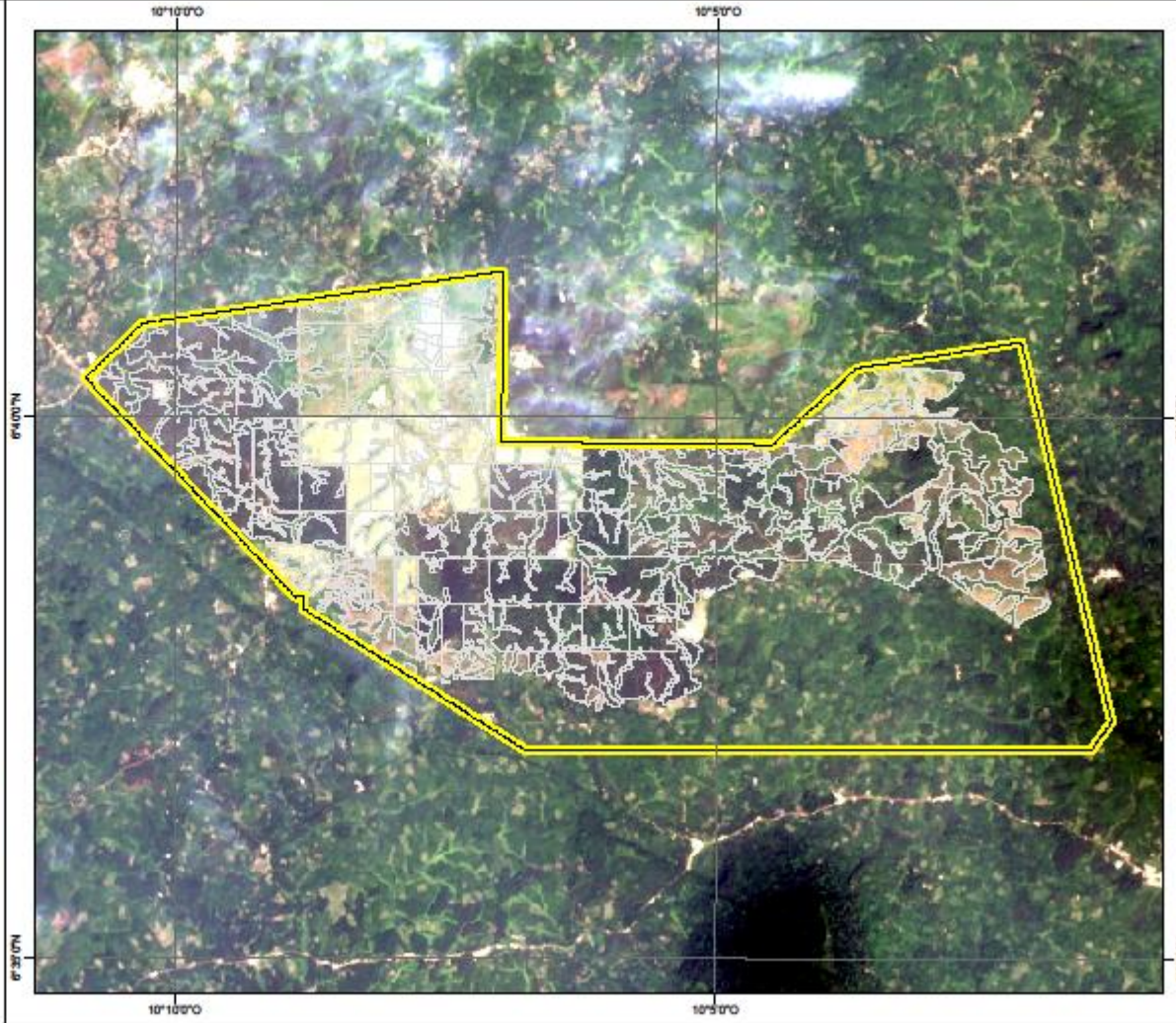
Legend :

- Concession
- Planted blocks

Source :

- > Concession limits : GPS survey
- > Background : Landsat 8 - Jan. 2015 - true color
- > Date of edition : June 2017
- > Author : Socfino SA

Projection system.....UTM
 Zone.....29 North
 Ellipsoid.....WGS84
 Datum.....WGS84
 UTM Grid.....5'



Salala was created by the Government and subsequently sold to a private investor. The wars at the end of the 20th century destroyed completely the social and industrial infrastructures of SRC.

In 2007 Socfin acquired SRC from Agrifinal and the modernisation and rehabilitation of Salala started. Today 4 000 ha out of the 8 000 ha concession are replanted with rubber only.

[KML file](#)